

IMAP

IMAP Configuration

Server: my.mailhappen.com

Security: SSL/TLS

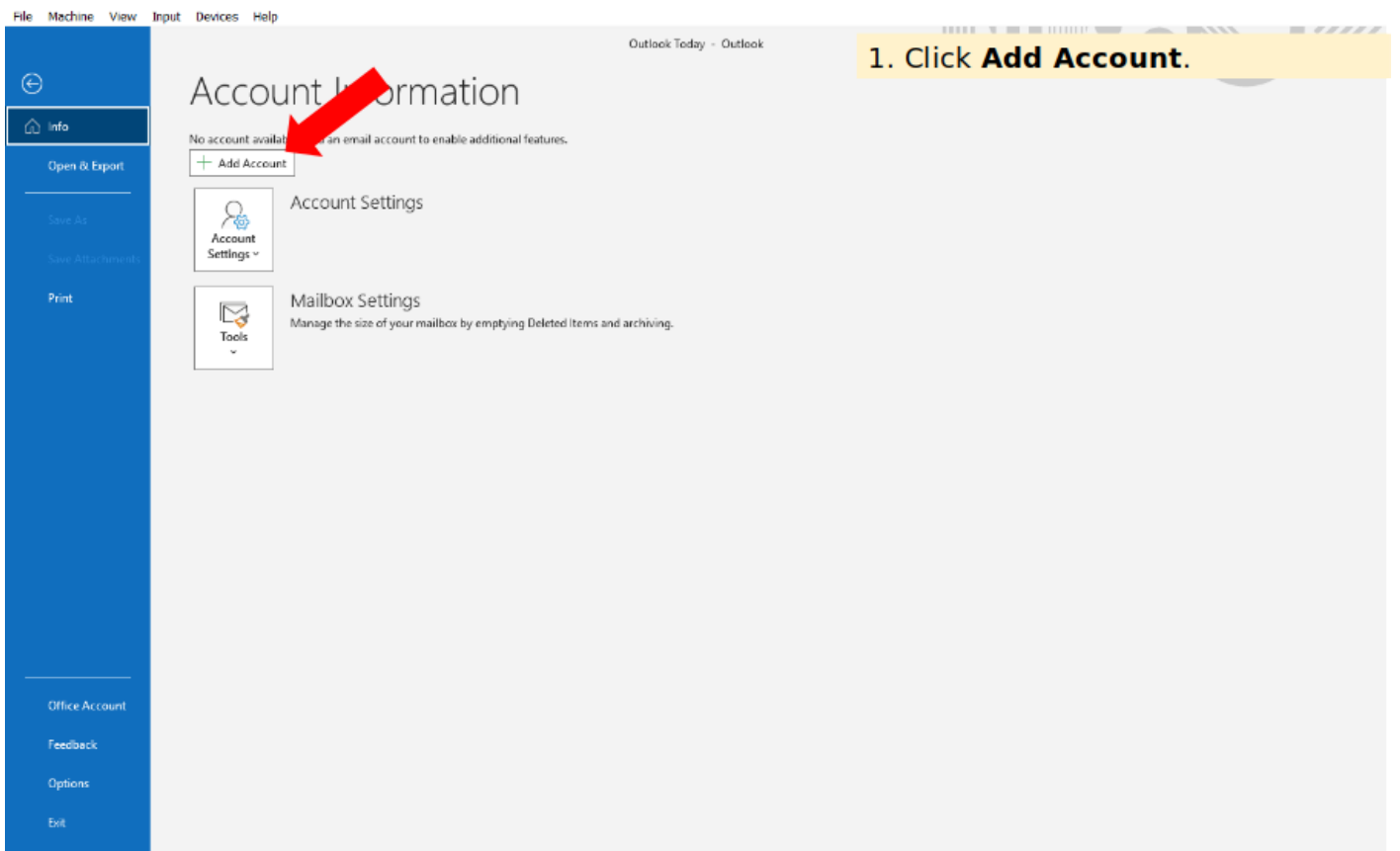
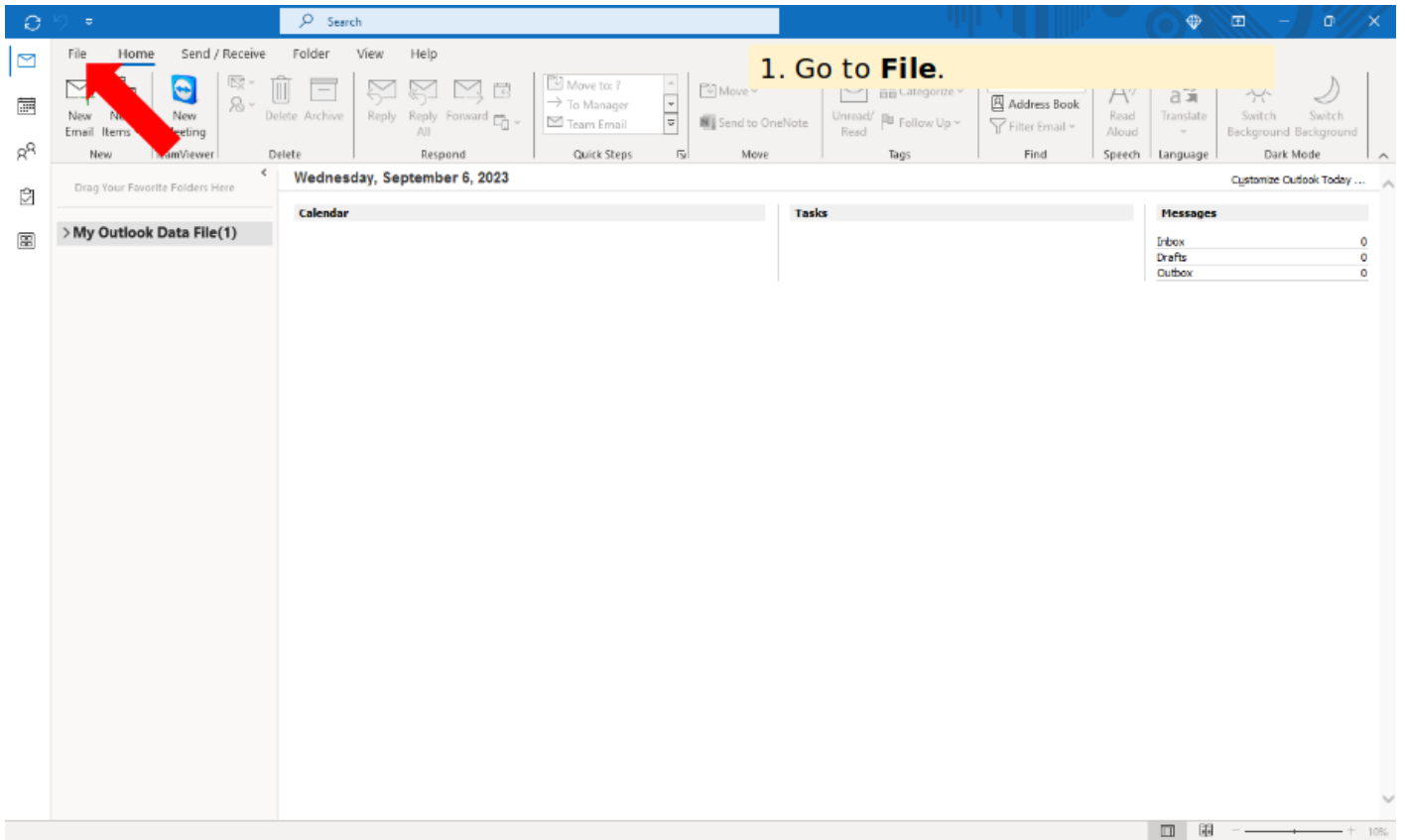
Port: 993

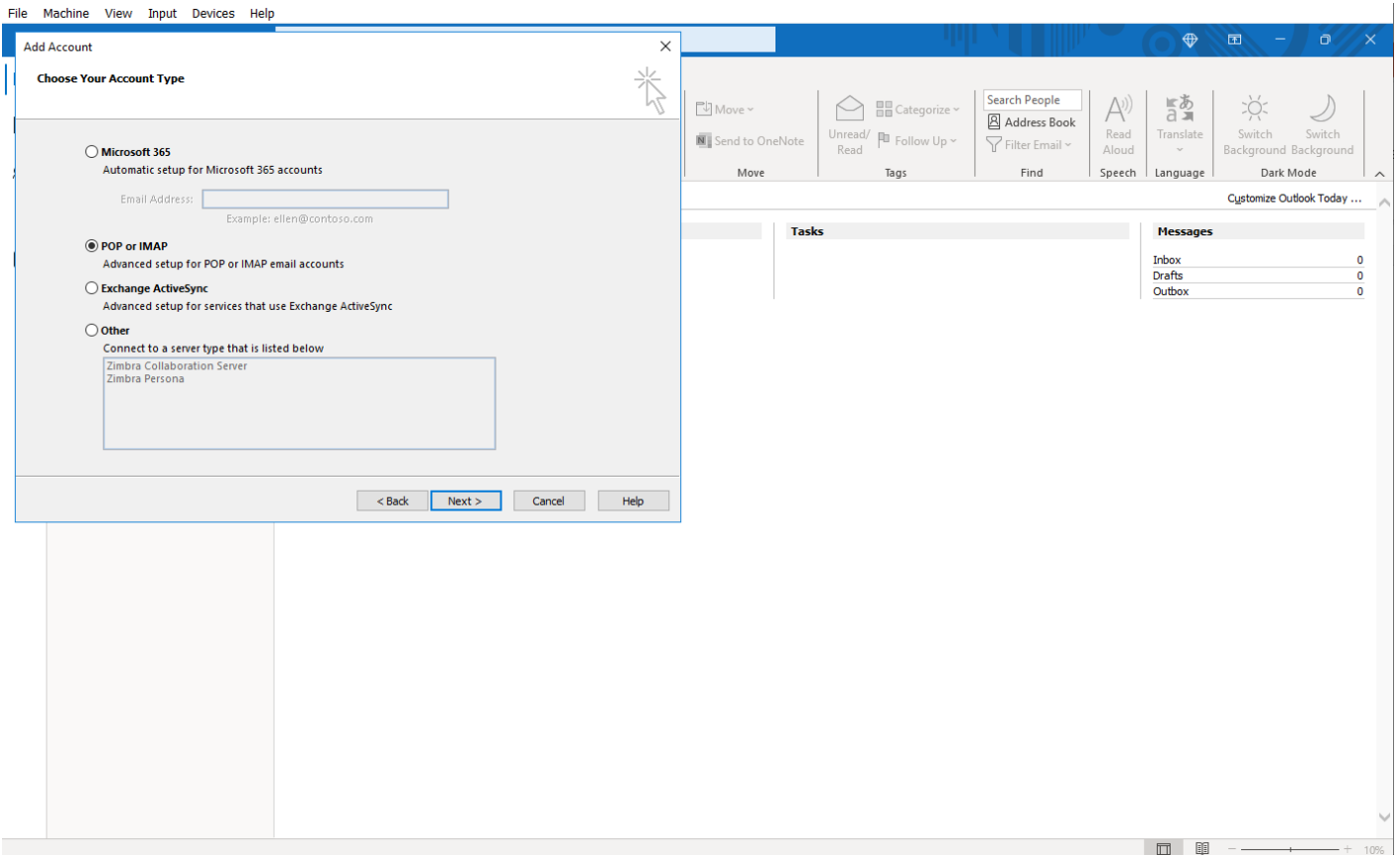
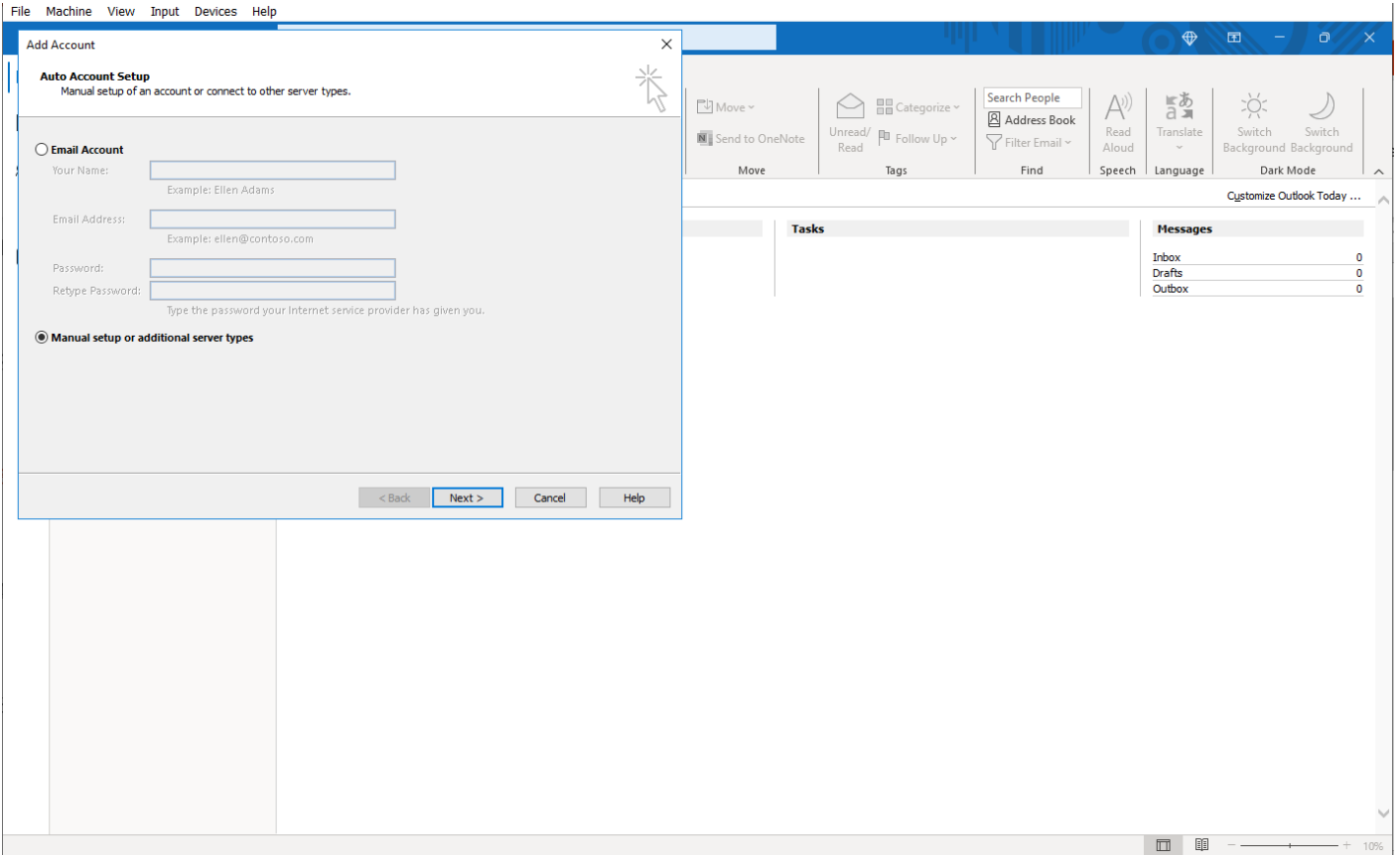
SMTP Configuration

Server: my.mailhappen.com

Security: SSL/TLS

Port: 465





**POP and IMAP Account Settings**

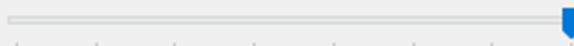
Enter the mail server settings for your account.

User InformationYour Name: Email Address: **Server Information**Account Type: ▾Incoming mail server: Outgoing mail server (SMTP): **Logon Information**User Name: Password: Remember password Require logon using Secure Password Authentication (SPA)**Test Account Settings**

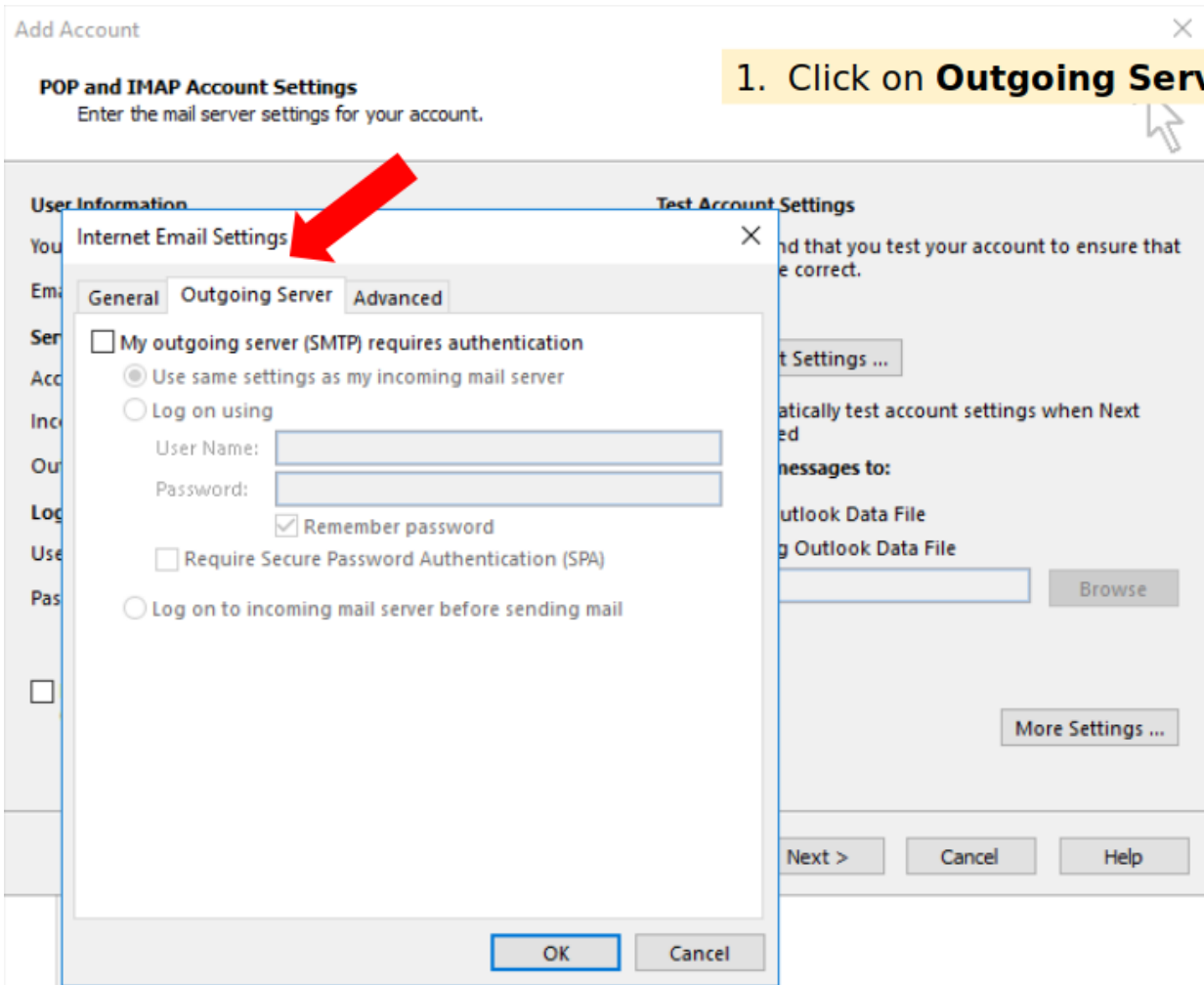
We recommend that you test your account to ensure that the entries are correct.

 Automatically test account settings when Next is clicked

Mail to keep offline: All



1. Click on **Outgoing Server**.





POP and IMAP Account Settings

Enter the mail server settings for your account.

User Information

Test Account Settings

You
Em
Ser
Acc
In
Ou
Log
Use
Pas

Internet Email Settings



General **Outgoing Server** Advanced

My outgoing server (SMTP) requires authentication

Use same settings as my incoming mail server

Log on using

User Name:

Password:

Remember password

Require Secure Password Authentication (SPA)

OK

Cancel

nd that you test your account to ensure that
e correct.

t Settings ...

atically test account settings when Next
ed

offline: All

More Settings ...

Next >

Cancel

Help



POP and IMAP Account Settings

Enter the mail server settings for your account.

User Information | **Test Account Settings**

Internet Email Settings ✕

General | **Outgoing Server** | Advanced

Server Port Numbers

Incoming server (IMAP):

Use the following type of encrypted connection: ▾

Outgoing server (SMTP):

Use the following type of encrypted connection: ▾

Server Timeouts

Short Long 1 minute

Folders

Root folder path:

Sent Items

Do not save copies of sent items

Deleted Items

Mark items for deletion but do not move them automatically
Items marked for deletion will be permanently deleted when the items in the mailbox are purged.

Purge items when switching folders while online

nd that you test your account to ensure that
e correct.

t Settings ...

atically test account settings when Next
ed

offline: All

POP and IMAP Account Settings

Enter the mail server settings for your account.

1. Fill up required port number.
2. Choose **SSL/TLS**.
3. Click **OK**.

User Information

Test Ac

Internet Email Settings

General | **Outgoing Server** | Advanced

Server Port Numbers

Incoming server (IMAP): Use Defaults

Use the following type of encrypted connection: **SSL/TLS**

Outgoing server (SMTP): Use Defaults

Use the following type of encrypted connection: **SSL/TLS**

Server Timeouts

Short Long 1 minute

Folders

Root folder path:

Sent Items

Do not save copies of sent items

Deleted Items

Mark items for deletion but do not move them automatically
Items marked for deletion will be permanently deleted when the items in the mailbox are purged.

Purge items when switching folders while online

nd that you test your account to ensure that
e correct.

t Settings ...

atically test account settings when Next
ed

offline: All

POP and IMAP Account Settings

Enter the mail server settings for your account.

1. Click **Next**.



User Information

Your Name:

Email Address:

Server Information

Account Type:

Incoming mail server:

Outgoing mail server (SMTP):

Logon Information

User Name:

Password:

Remember password

Require logon using Secure Password Authentication (SPA)

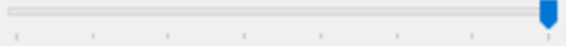
Test Account Settings

We recommend that you test your account to ensure that the entries are correct.

Test Account Settings ...

Automatically test account settings when Next is clicked

Mail to keep offline: All



More Settings ...

< Back

Next >

Cancel

Help



Test Account Settings

Congratulations! All tests completed successfully. Click Close to continue.

Stop

Close

1. Wait for outlook test.
2. After completed, click **Close**.

Tasks Errors

Tasks	Status
✓ Log onto incoming mail server (IMAP)	Completed
✓ Send test email message	Completed

test your account to ensure that

account settings when Next

Logon Information

User Name:

Password:

Mail to keep offline: All

Remember password

Require logon using Secure Password Authentication (SPA)

More Settings ...

< Back

Next >

Cancel

Help

1. Click **Finish** and ready to used.

You're all set!

We have all the information we need to set up your account.

Set up Outlook Mobile on my phone, too

Add another account...

< Back

Finish

Help



Revision #3

Created 4 March 2024 03:29:17 by Samuel Sim

Updated 4 March 2024 05:34:19 by Samuel Sim