

POP3

POP3 Configuration

Server: my.mailhappen.com

Security: SSL/TLS

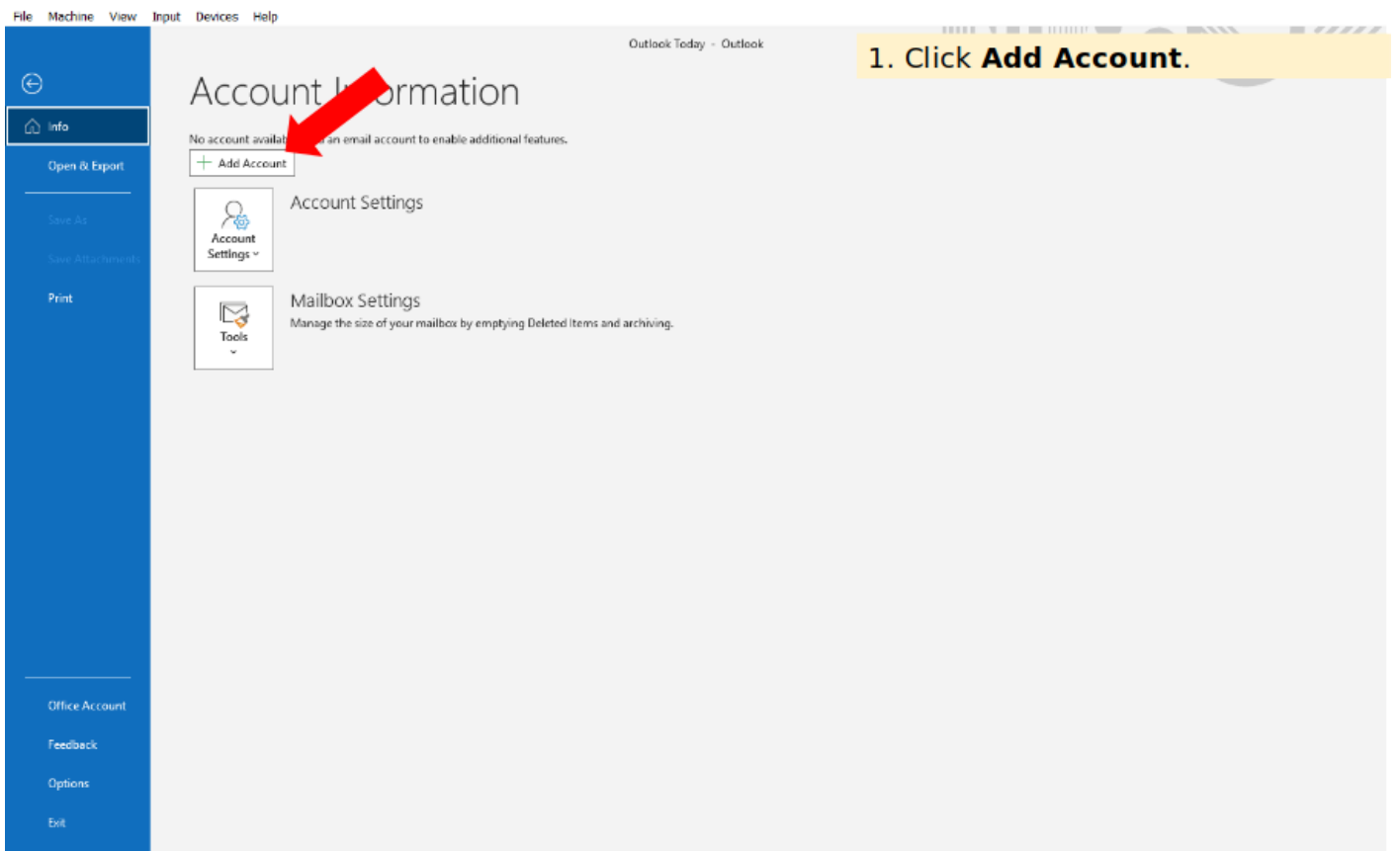
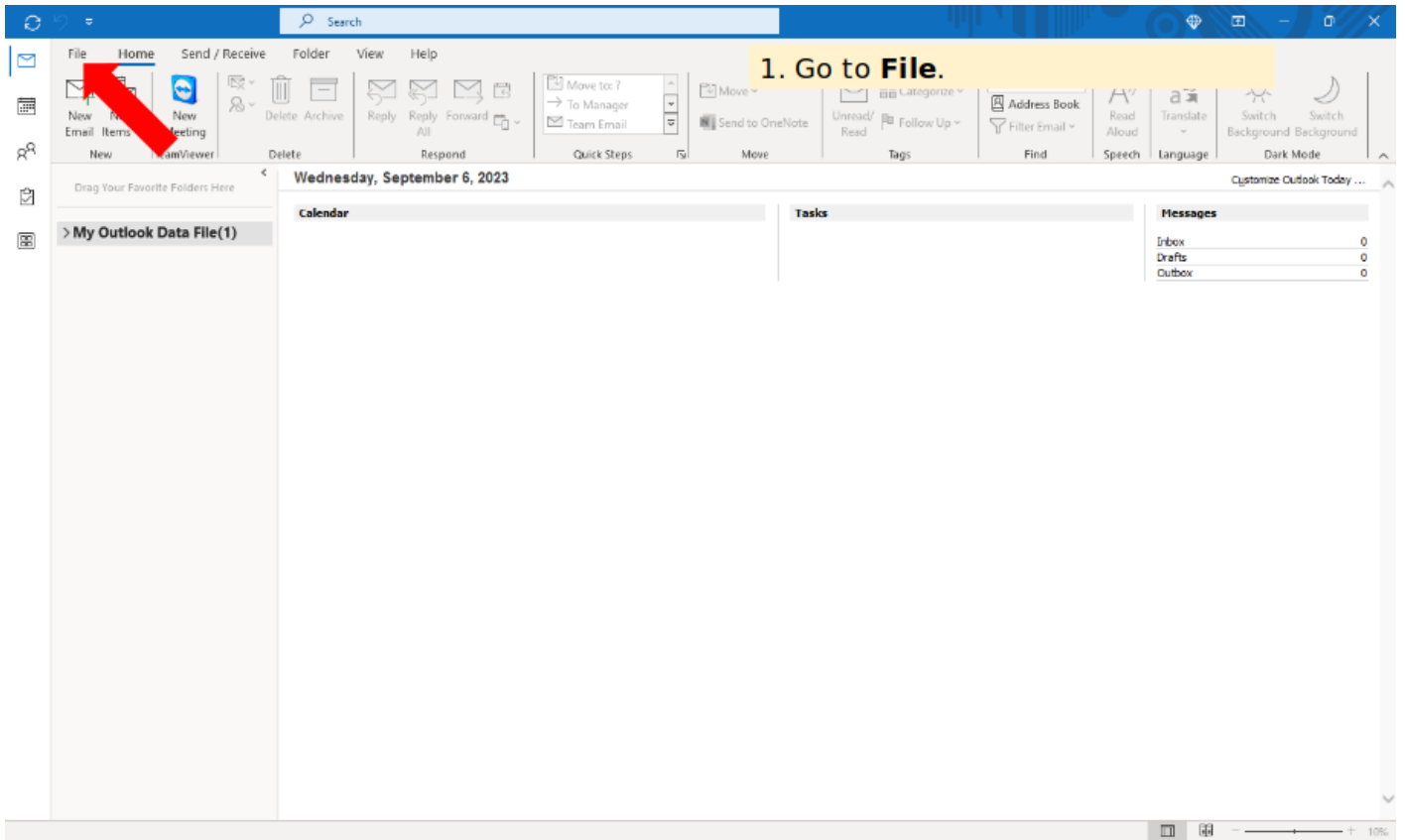
Port: 995

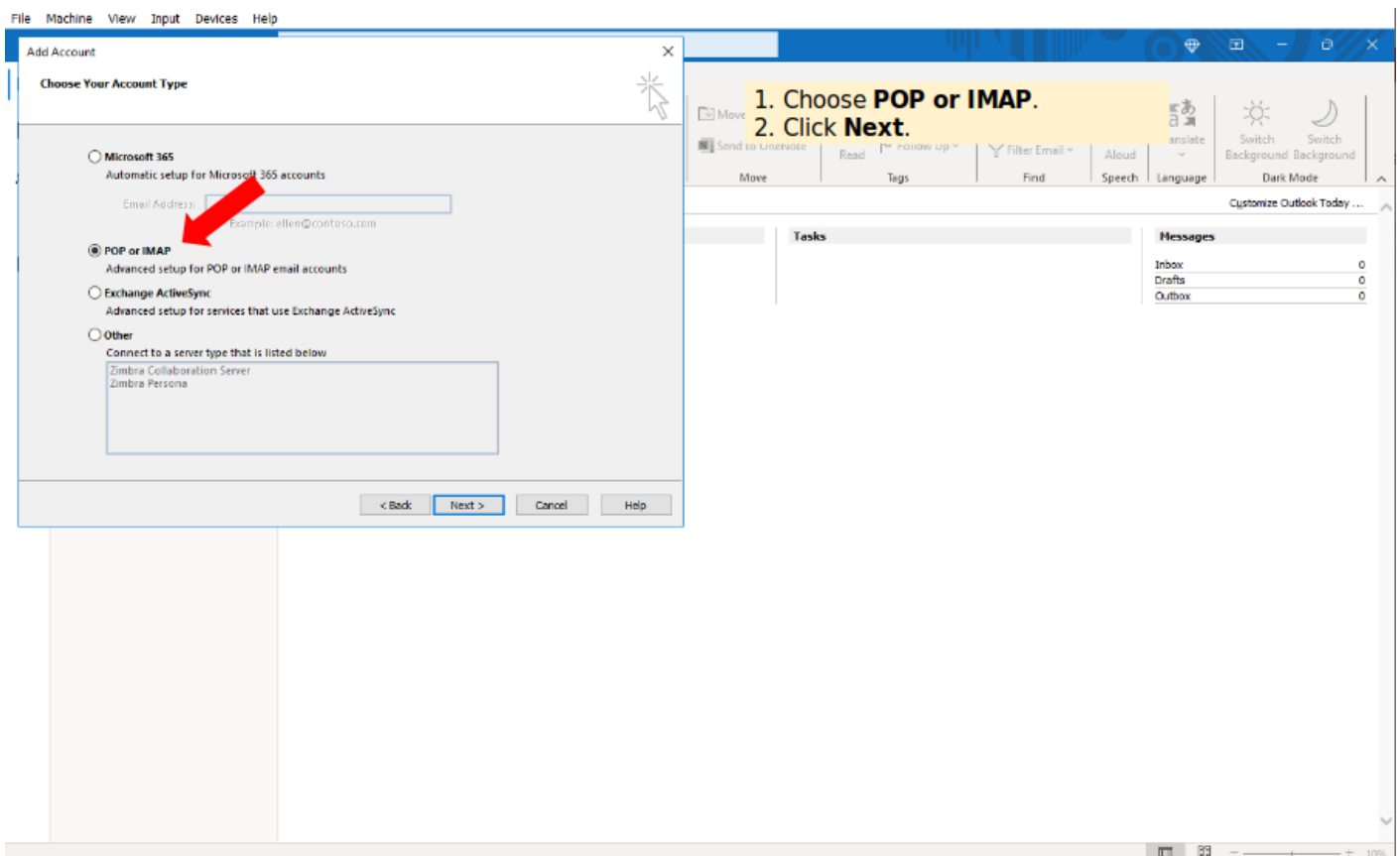
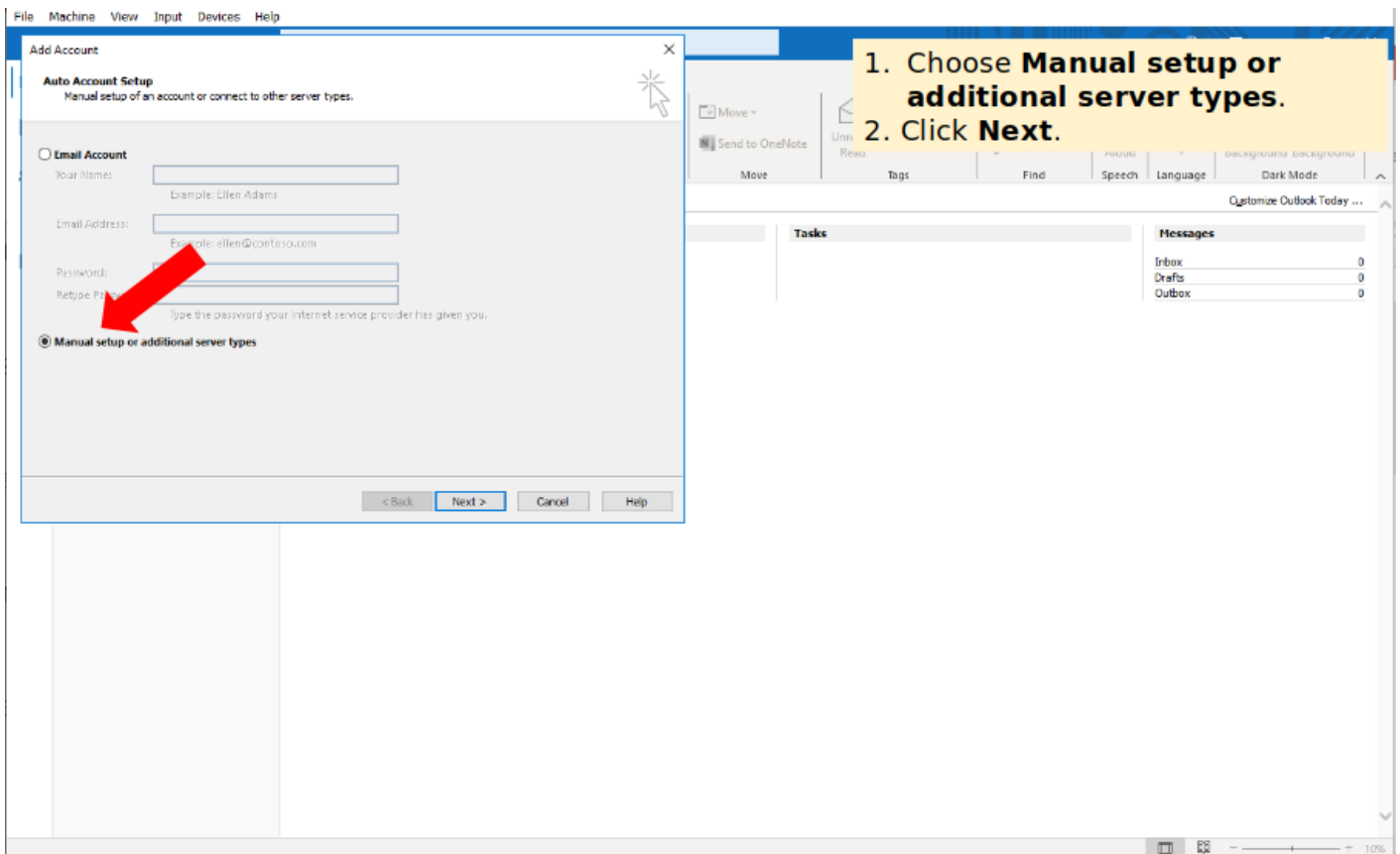
SMTP Configuration

Server: my.mailhappen.com

Security: SSL/TLS

Port: 465





POP and IMAP Account Settings

Enter the mail server settings for your account.

1. Input required information.
2. Account type choose **POP**.
3. Tick **Remember password**.
4. Click **More Settings**

User Information

Your Name:

Email Address:

Server Information

Account Type:

Incoming mail server:

Outgoing mail server (SMTP):

Logon Information

User Name:

Password:

☒ Remember password☐ Require logon using Secure Password Authentication (SPA)**Test**

We recommend that you test your account to ensure that the entries are correct.

☒ Automatically test account settings when Next is clicked**Deliver new messages to:**

☒ New Outlook Data File

☐ Existing Outlook Data File

1. Click on **Outgoing Server**.

Add Account

POP and IMAP Account Settings
Enter the mail server settings for your account.

User Information

You
Em
Ser
Acc
Inco
Our
Log
Use
Pas

Internet Email Settings

General **Outgoing Server** Advanced

☐ My outgoing server (SMTP) requires authentication

☒ Use same settings as my incoming mail server

☐ Log on using

User Name:

Password:

☒ Remember password

☐ Require Secure Password Authentication (SPA)

☐ Log on to incoming mail server before sending mail

Test Account Settings

nd that you test your account to ensure that
e correct.

t Settings ...

atically test account settings when Next
ed

essages to:

utlook Data File

g Outlook Data File

Browse

More Settings ...

Next > Cancel Help

OK Cancel

Add Account

POP and IMAP Account Settings
Enter the mail server settings for your account.

User Information Test Account

Internet Email Settings

General Outgoing Server Advanced

☒ My outgoing server (SMTP) requires authentication

☒ Use same settings as my incoming mail server

☐ Log on using

User Name:

Password:

☒ Remember password

☐ Require Secure Password Authentication (SPA)

OK Cancel

1. Tick **My outgoing server (SMTP) requires authentication.**

2. Click **OK.**

POP and IMAP Account Settings

Enter the mail server settings for your account.

1. Click on Advanced.**User Information****Internet Email Settings**General Outgoing Server **Advanced****Server Port Numbers**

Incoming server (POP3): 110 Use Defaults

☐ This server requires an encrypted connection (SSL/TLS)

Outgoing server (SMTP): 25

Use the following type of encrypted connection: None

Server Timeouts

Short Long 1 minute

Delivery☒ Leave a copy of messages on the server☒ Remove from server after 14 days☐ Remove from server when deleted from 'Deleted Items'

OK

Cancel

Add Account ×

POP and IMAP Account Settings
Enter the mail server settings for your account.

User Information Test Account

Internet Email Settings

General **Outgoing Server** Advanced

Server Port Numbers

Incoming server (POP3):

☒ This server requires an encrypted connection (SSL/TLS)

Outgoing server (SMTP):

Use the following type of encrypted connection:

Server Timeouts

Short Long 1 minute

Delivery

☒ Leave a copy of messages on the server

☒ Remove from server after days

☐ Remove from server when deleted from 'Deleted Items'

1. Fill up required port number.
2. Tick checkbox **This server requires an encrypted connection (SSL/TLS)**.
3. Choose **SSL/TLS**.
4. Click **OK**.

POP and IMAP Account Settings

Enter the mail server settings for your account.

1. Click **Next**.

User Information	Test Account Settings
Your Name: <input type="text" value="User"/>	We recommend that you test your account to ensure that the entries are correct.
Email Address: <input type="text" value="user@mailhappen.com"/>	<input type="button" value="Test Account Settings ..."/>
Server Information	<input checked="" type="checkbox"/> Automatically test account settings when Next is clicked
Account Type: <input type="text" value="POP3"/>	Deliver new messages to:
Incoming mail server: <input type="text" value="mail.mailhappen.com"/>	<input checked="" type="radio"/> New Outlook Data File
Outgoing mail server (SMTP): <input type="text" value="mail.mailhappen.com"/>	<input type="radio"/> Existing Outlook Data File
Logon Information	<input type="text" value=""/> <input type="button" value="Browse"/>
User Name: <input type="text" value="user@mailhappen.com"/>	<input type="button" value="More Settings ..."/>
Password: <input type="password" value="*****"/>	
<input checked="" type="checkbox"/> Remember password	
<input type="checkbox"/> Require logon using Secure Password Authentication (SPA)	
<div><input type="button" value=" < Back"/> <input type="button" value=" Next > "/> <input type="button" value=" Cancel"/> <input type="button" value=" Help"/></div>	

Test Account Settings

Congratulations! All tests completed successfully. Click Close to continue.

Stop

Close

Tasks

Errors

Tasks

- ✓ Log onto incoming mail server (IMAP)
- ✓ Send test email message

Status

Completed
Completed

Logon Information

User Name:

user@mailhappen.com

Password:

Mail to keep offline: All

☒ Remember password☐ Require logon using Secure Password Authentication (SPA)

More Settings ...

< Back

Next >

Cancel

Help

1. Wait for outlook test.
2. After completed, click **Close**.

1. Click **Finish** and ready to used.

You're all set!

We have all the information we need to set up your account.

☐ Set up Outlook Mobile on my phone, too

Add another account...

< Back

Finish

Help

Revision #4

Created 4 March 2024 05:28:46 by Samuel Sim

Updated 4 March 2024 05:34:12 by Samuel Sim